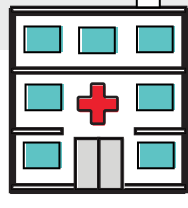


# Which communication solution is right for your hospital or health system?

Is your organization considering an investment in a clinical communication solution?

Determining which solution is best for your organization involves many different considerations—size, requirements, budget, current technology, future goals, and more. If you're a healthcare CIO or part of a clinical leadership team considering an investment in clinical communication and care collaboration technology, use this flowchart to help you decide which communication solution is a good fit for your organization today.



## My healthcare organization is:

A hospital or health system

A rehabilitation clinic, a small private practice, an acute care clinic, or related

**TIP:** The communication needs of these types of healthcare organizations can usually be met with less comprehensive tools and solutions

### TRUE OR FALSE:

**My organization's only concern is finding a solution that is hands-free to address PPE concerns.**



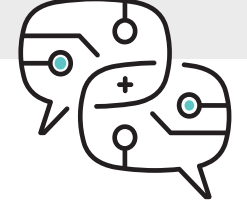
**True.**  
We don't need to solve for complex communication challenges at this point. Our main concern is hands-free communication.

**False.**  
My organization needs a solution that can solve for more problems than hands-free communication.

A badge solution that allows for hands-free communication, but with limited ability for message context, group messages, or audit trail/history log might work best for your organization.

### TRUE OR FALSE:

**My organization wants to eliminate disparate, department-level solutions that don't integrate with each other.**



**True.**  
We need a hospital-wide solution to handle communication needs including secure messaging, on-call scheduling, contact center/operators, clinical alerting, etc.

**False.**  
We just need a stand-alone tool for secure texting or a messaging solution for one department.

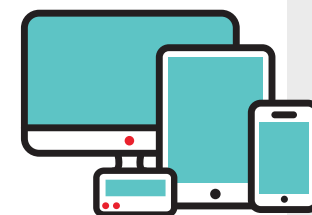
**TIP:** Many basic secure texting apps lack the ability to provide clinical context with information from your EHR, filter messages by priority, or search by role.

**Does your organization need a communication solution to integrate with on-premise solutions like nurse call or patient monitoring?**

**Yes.** Connecting key systems, people, and information is important to my organization.

**No.** It's not a priority at this time.

**Does your organization need communication to reach all care team members regardless of device, including pagers?**

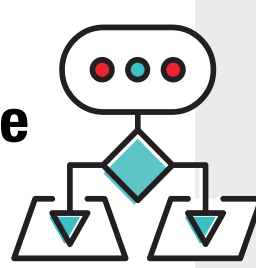


**Yes.** We'd like to have the option for our staff to have the ability to use the best device for their roles (mobile devices, tablets, pagers, etc.)

**Not necessarily.**

### TRUE OR FALSE:

**My organization could benefit from technology that can improve clinical workflows through automated communication and notifications.**



**True.**  
My organization needs improved workflows that address the unique requirements of my care teams.

**False.**

A secure texting app that provides simple messages between hospital staff might be the best fit for your organization.

**A comprehensive clinical communication and collaboration platform, like Spok Care Connect<sup>®</sup>, sounds like a great fit.**

Smarter, faster clinical communication.  
**Explore all available solutions at [spok.com/spokcareconnect](http://spok.com/spokcareconnect)**